

RF Balun Transformer

EBA1667-G077769

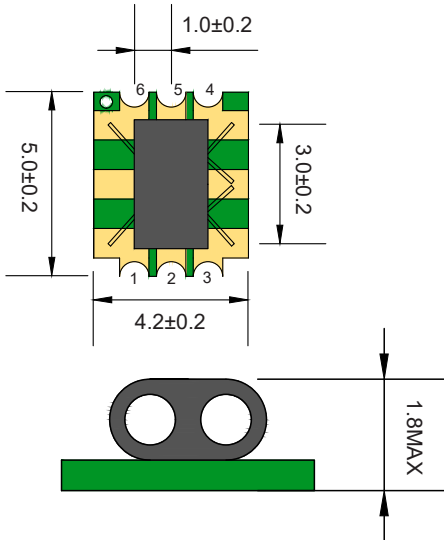
2023-08-28 Rev. 0



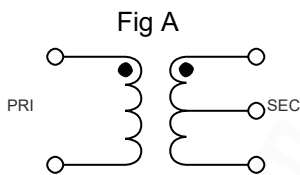
50Ω 1: 4 CT Flux Coupled Transformer

100-950 MHz

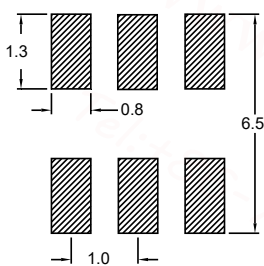
Outline Drawing(mm)



Electrical structure



Recommended layout(mm)



Pin Connections

Input	6
Output 1	4
Output 2	3
Ground	1, 2

Features

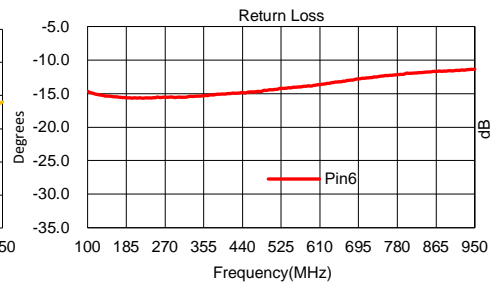
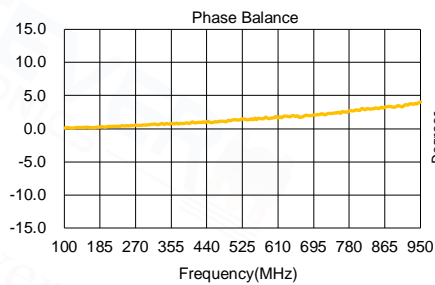
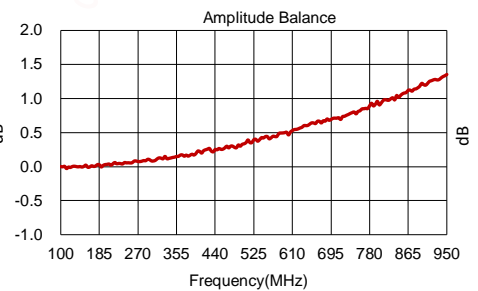
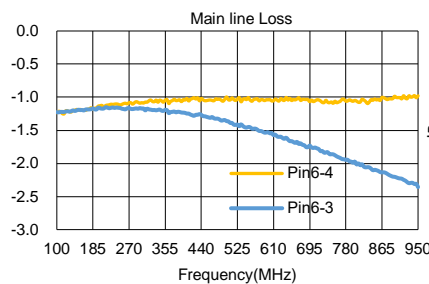
- RF Power, 0.25W
- DC Current, 30mA
- Operating temperature range: -40°C to +85°C
- Storage temperature range: -55°C to +100°C
- 260°C Reflow Compatible
- RoHS compliant and lead free

Applications

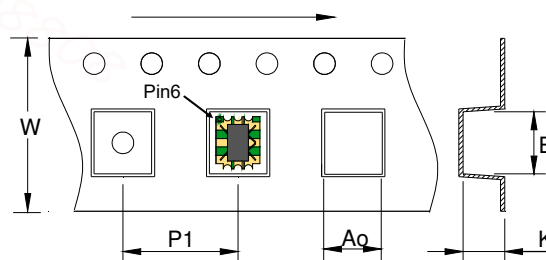
- For Doccis 3.0 & 3.1 Cable Modem.
- For Wideband Push-pull Amplifiers.
- For CATV Amplifiers Module & Set top box.
- For CATV Optical Receivers and Amplifiers.
- For VHF/UHF Transmitters and Push-pull Amplifiers.

Electrical Specifications:TA=25°C, 0dBm, Z0=50Ω

Parameter	Test Conditions	Units	Min	Typ	Max
Main line Loss (Pin6-4)	100-950MHz	dB	—	1.0	1.3
Main line Loss (Pin6-3)	100-950MHz	dB	—	2.2	3.0
Amplitude Balance	100-950MHz	dB	—	1.0	2.5
Phase Balance	100-950MHz	°	—	4.0	10.0
Input Return Loss(Pin6)	100-950MHz	dB	8.0	12.0	—



Carrier Tape Orientation



Tape & Reel Information

Parameter	Units	Value
Qty per reel	PCS	2000
Reel Size	mm	330
Tape Width	mm	12.00
Pitch	mm	8.00
Ao	mm	4.80
Bo	mm	5.80
Ko	mm	3.00