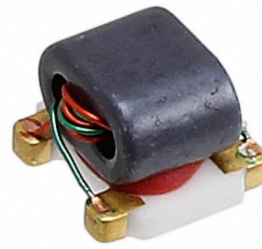


# RF Balun Transformer

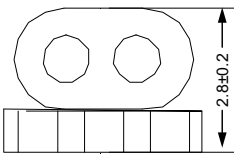
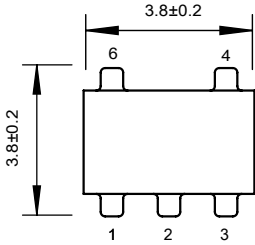
## EBE4545-1013003

2020-03-31 Rev. 0



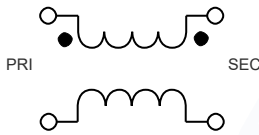
75Ω 1:1 Transmission Line Transformer 45-1250MHz

### Outline Drawing(mm)

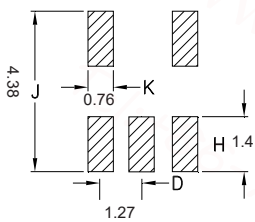


### Electrical structure

Fig 0



### Recommended layout(mm)



### Pin Connections

Input	4
Output 1	3
Output 2	1
Ground	6
Not Used	2,5

### Features

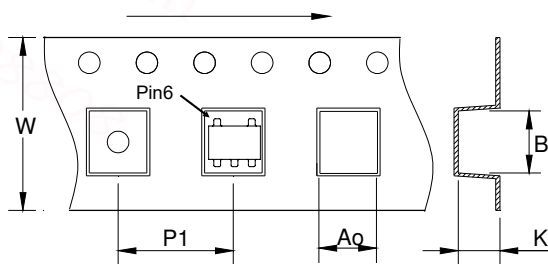
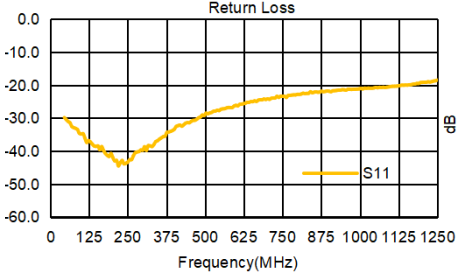
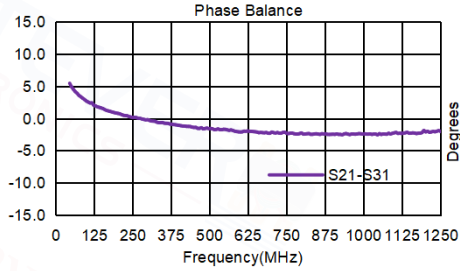
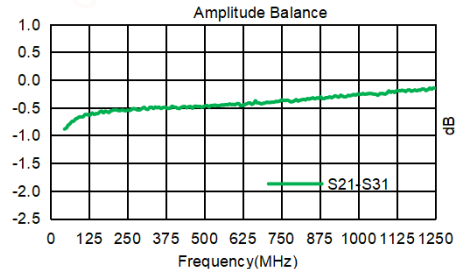
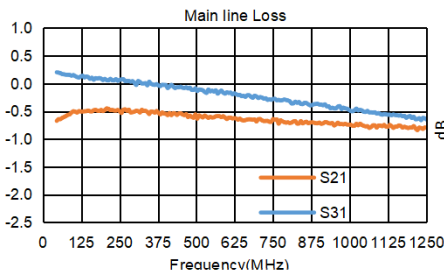
- Excellent amplitude unbalance, 0.5 dB typ. and phase unbalance, 2 deg. typ. in 0.8 dB bandwidth
- RF Power, 0.25W
- Operating temperature range: -40 C to +85 C
- Storage temperature range: -55 C to +100 C

### Applications

- Impedance matchin
- Balanced amplifie
- Balun
- Cellula and VHF

### Electrical Specifications:TA=25℃, 0dBm, Z0=75Ω

Parameter	Test Conditions	Units	Min	Typ	Max
Main line Loss (Pin4-3)	45-1250MHz	dB	—	0.5	1.G
Main line Loss (Pin4-1)	45-1250MHz	dB	—	0.8	1.G
Amplitude Balance	45-1250MHz	dB	0.0	0.1	1.2
Phase Balance	45-1250MHz	°	0.0	H0	10.0
Input Return Loss(Pin4)	45-1250MHz	dB	16.0	20.0	—



Parameter	Units	Value
Qty per reel	PCS	2000
Reel Size	mm	330
Tape Width	mm	12.00
Pitch	mm	12.00
Ao	mm	4.50
Bo	mm	4.50
Ko	mm	3.20