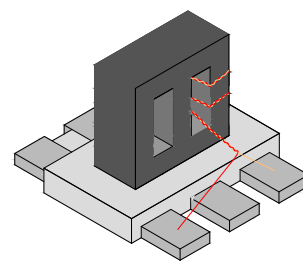


RF Balun Transformer

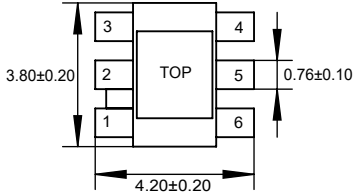
EBL16-3-B012331

2025-01-08 Rev. 0

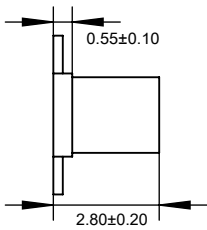


50Ω 1:1 Transmission Line Transformer 10-6000MHz

Outline Drawing(mm)



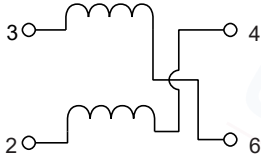
Top View



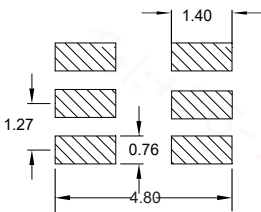
Side View

Electrical structure

Fig L



Recommended layout(mm)



Pin Connections

Input	3
Output 1	4
Output 2	6
Ground	2
Not Used	1

Features

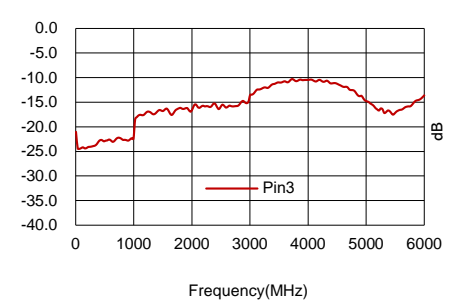
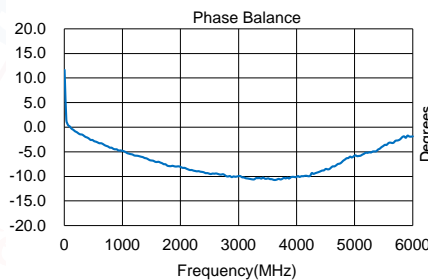
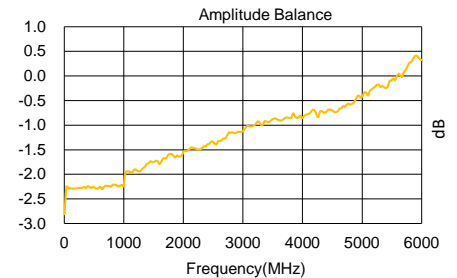
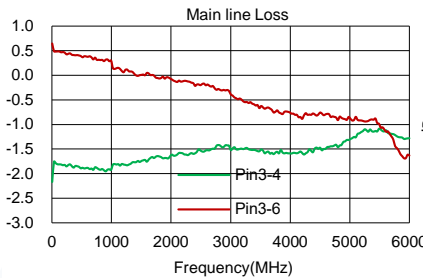
- Operating temperature range: -40 C to +125 C
- Storage temperature range: -55 C to +125 C
- 260°C Reflow Compatible
- RoHS compliant and lead free
- Input Power: 250mW
- DC Current: 30mA

Applications

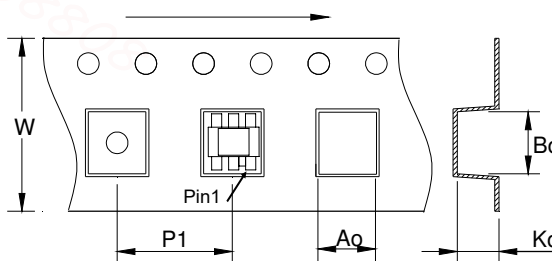
- For Motorola Walkie-talkie.
- For Car Streaming Media Rearview Mirror.
- For Broadband and Wireless Communications.
- For Wireless Microphone & Marine Communications.
- For Ideally Suited LTE, Cellular, UMTS, WiFi, WiMAX.
- For Differential Modulator/demodulator and Active Mixers.

Electrical Specifications:TA=25°C, 0dBm, Z0=50Ω

Parameter	Test Conditions	Units	Min	Typ	Max
Main line Loss (Pin3-4)	10-6000MHz	dB	—	1.5	2.5
Main line Loss (Pin3-6)	10-6000MHz	dB	—	1.5	2.5
Amplitude Balance	10-6000MHz	dB	0.0	2.0	2.5
Phase Balance	10-6000MHz	°	0.0	10.0	20.0
Input Return Loss(Pin3)	10-6000MHz	dB	8.0	12.0	—



Carrier Tape Orientation



Tape & Reel Information

Parameter	Units	Value
Qty per reel	PCS	2000
Reel Size	mm	330
Tape Width	mm	12.00
Pitch	mm	8.00
Ao	mm	4.30
Bo	mm	4.30
Ko	mm	3.20