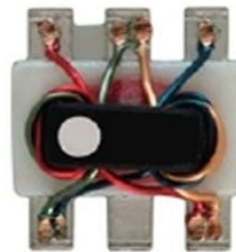


# RF Balun Transformer

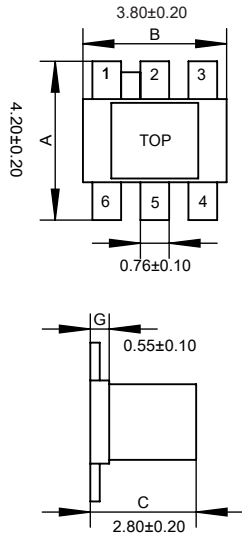
## EBW2-33-D012571

2020-11-30 Rev. 1



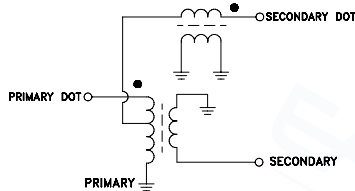
50Ω 1:2 Transmission Line Transformer 10-3000 MHz

### Outline Drawing(mm)

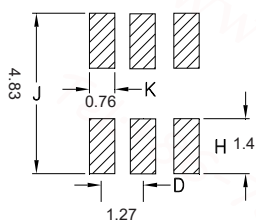


### Electrical structure

Fig W



### Recommended layout(mm)



### Pin Connections

Input	6
Output 1	4
Output 2	3
Ground	2, 5

### Features

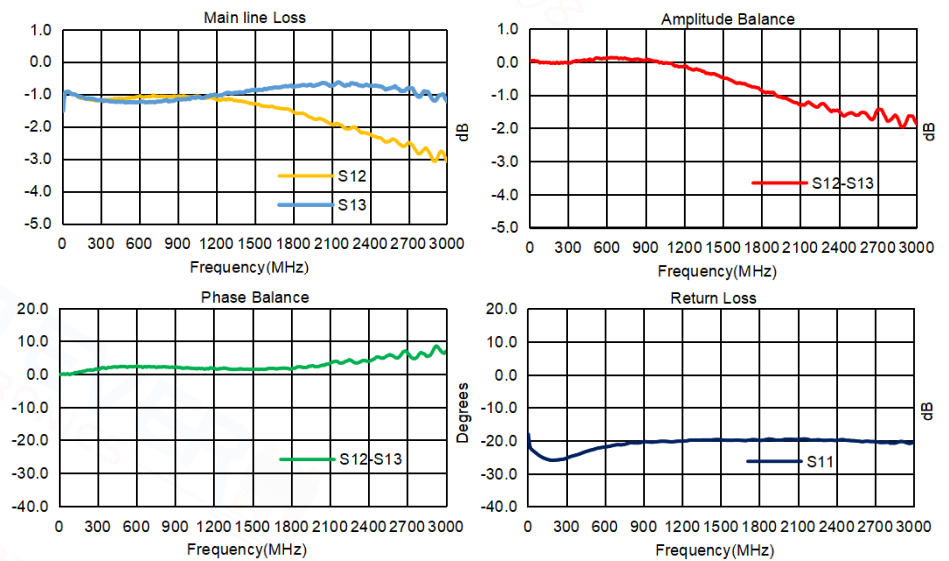
- RF Power, 0.25W
- Operating temperature range: -40 C to +85 C
- Storage temperature range: -55 C to +100 C

### Applications

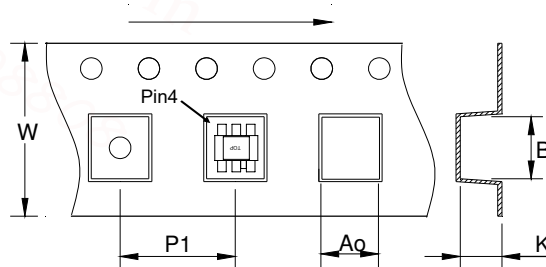
- Impedance matching
- Balanced amplifier
- Balun
- Cellular and VHF

### Electrical Specifications: TA=25°C, 0dBm, Z0=50Ω

Parameter	Test Conditions	Units	Min	Typ	Max
Main line Loss (Pin6-4)	10-3000MHz	dB	—	2.0	3.5
Main line Loss (Pin6-3)	10-3000MHz	dB	—	1.0	2.0
Amplitude Balance	10-3000MHz	dB	—	2.0	3.0
Phase Balance	10-3000MHz	°	—	8.0	20.0
Input Return Loss(Pin6)	10-3000MHz	dB	15.0	20.0	—



### Carrier Tape Orientation



### Tape & Reel Information

Parameter	Units	Value
Qty per reel	PCS	2000
Reel Size	mm	330
Tape Width	mm	12.00
Pitch	mm	8.00
Ao	mm	4.50
Bo	mm	4.50
Ko	mm	3.20