

Power Splitter/Combiner

EDK1007-C068331

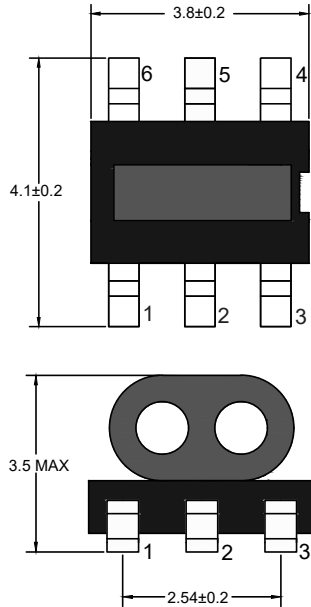
2022-08-24 Rev. 0



75Ω 2 Way-0° Power Divider

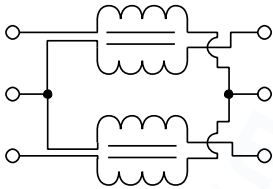
5-2150MHz

Outline Drawing(mm)

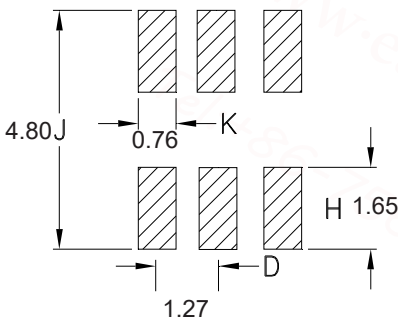


Electrical structure

Fig K



Recommended layout(mm)



Pin Connections

SUM PORT	4
PORT 1	6
PORT 2	1
GROUND	3
External 0.5pf Capacitor Ground	2.5

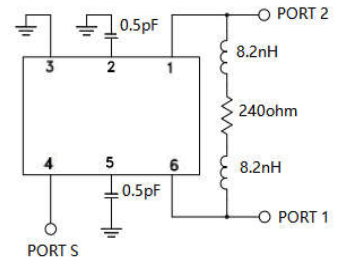
Features

- Operating temperature range: -40°C to +85°C
- Storage temperature range: -55°C to +100°C
- 260°C Reflow Compatible
- RoHS compliant and lead free
- DC Current: 500mA Max
- Input Power: 500mW Max

Applications

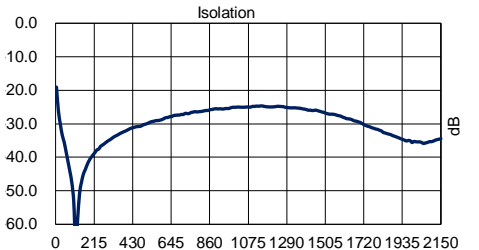
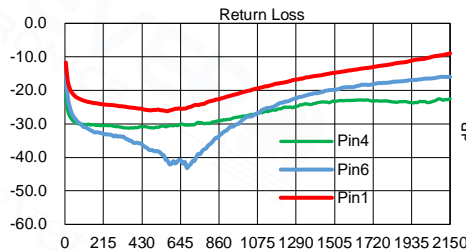
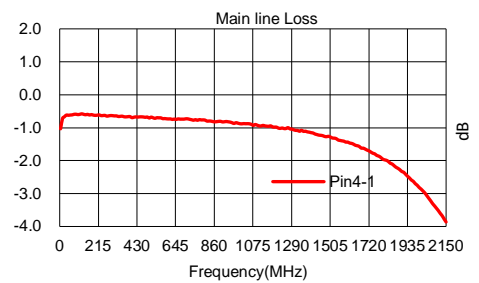
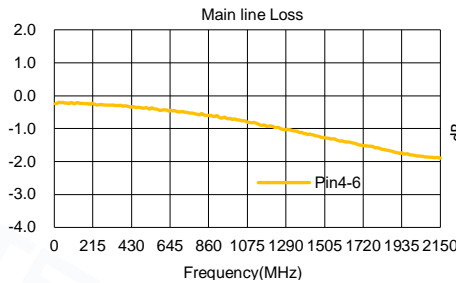
- For Docsis 3.0 & 3.1 Cable Modem.
- For Wideband Push-pull Amplifiers.
- For CATV Amplifiers Module & Set top box.
- For CATV Optical Receivers and Amplifiers.
- For VHF/UHF Transmitters and Push-pull Amplifiers.

Application circuit :

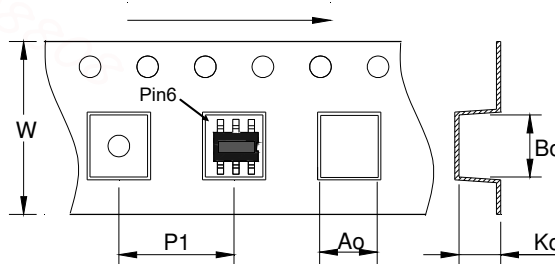


Electrical Specifications:TA=25°C, 0dBm, Z0=75Ω

Parameter	Test Conditions	Units	Min	Typ	Max
Main line Loss (Pin4-6)	5-2150MHz	dB	—	2.0	2.8
Main line Loss (Pin4-1)	5-2150MHz	dB	—	3.0	4.5
Input Return Loss	5-2150MHz	dB	14.0	20.0	—
Output Return Loss 1	5-2150MHz	dB	16.0	22.0	—
Output Return Loss 2	5-2150MHz	dB	10.0	16.0	—
Isolation	5-2150MHz	dB	16.0	25.0	—



Carrier Tape Orientation



Tape & Reel Information

Parameter	Units	Value
Qty per reel	PCS	2000
Reel Size	mm	330
Tape Width	mm	12.00
Pitch	mm	8.00
Ao	mm	4.30
Bo	mm	4.20
Ko	mm	3.50