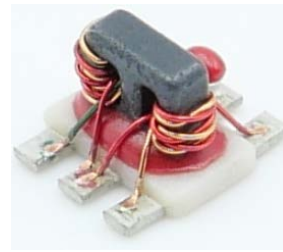


# Power Splitter/Combiner

## EDK2-10-B012331

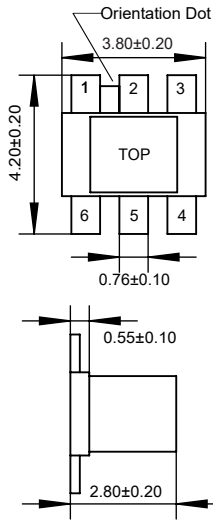
2020-07-02 Rev. 0



50Ω 2 Way-0° Power Divider

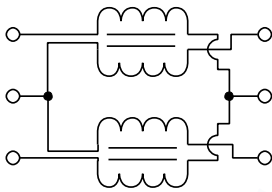
5-1000MHz

### Outline Drawing(mm)

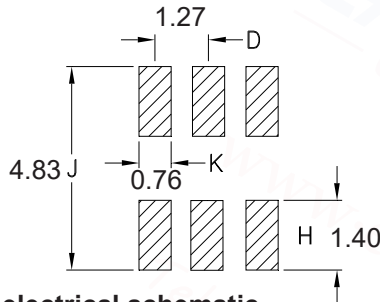


### Electrical structure

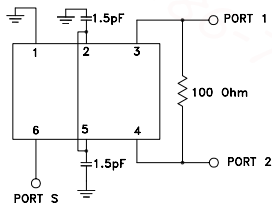
Fig K



### Recommended layout(mm)



### electrical schematic



### Pin Connections

SUM PORT	6
PORT 1	4
PORT 2	3
GROUND	1
EXT. CAPACITOR 1.5pF	2 OR 5 TO GND

### Features

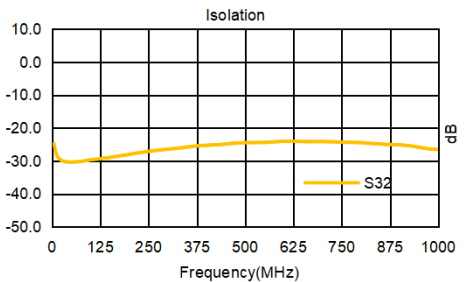
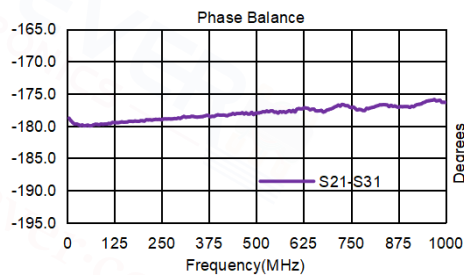
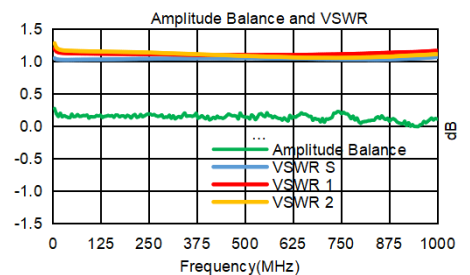
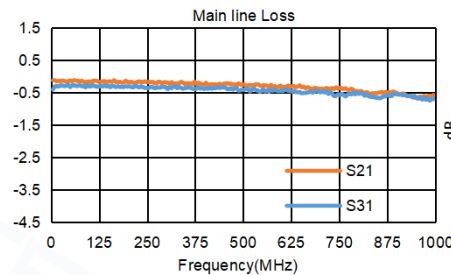
- Operating temperature range: -40°C to +85°C
- Storage temperature range: -55°C to +100°C
- RoHS compliant and lead free
- 260°C Reflow Compatible
- Input Power: 500mW Max
- DC Current: 100mA Max

### Applications

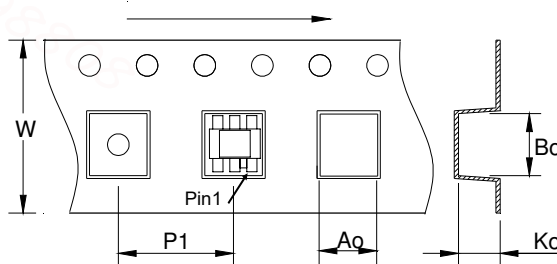
For Motorola Walkie-talkie.  
 For Car Streaming Media Rearview Mirror.  
 For Broadband and Wireless Communications.  
 For Wireless Microphone & Marine Communications.  
 For Ideally Suited LTE, Cellular, UMTS, WiFi, WiMAX.  
 For Differential Modulator/demodulator and Active Mixers.

### Electrical Specifications:TA=25°C, 0dBm, Z0=50Ω

Parameter	Test Conditions	Units	Min	Typ	Max
Main line Loss (Pin6-4)	5-1000MHz	dB	—	0.5	1.0
Main line Loss (Pin6-3)	5-1000MHz	dB	—	0.5	1.0
VSWR	5-1000MHz	dB	—	1.0	1.5
Amplitude Unbalance	5-1000MHz	dB	—	0.3	1.0
Phase Unbalance	5-1000MHz	dB	—	5.0	15.0
Isolation	5-1000MHz	dB	16.0	22.0	—



### Carrier Tape Orientation



### Tape & Reel Information

Parameter	Units	Value
Qty per reel	PCS	2000
Reel Size	mm	330
Tape Width	mm	12.00
Pitch	mm	12.00
Ao	mm	4.50
Bo	mm	4.50
Ko	mm	3.20