

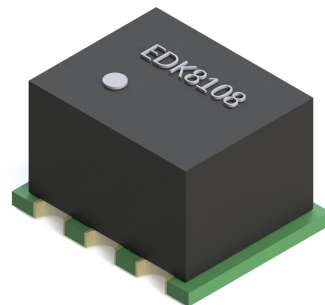
Power Splitter/Combiner

EDK8108-C055440

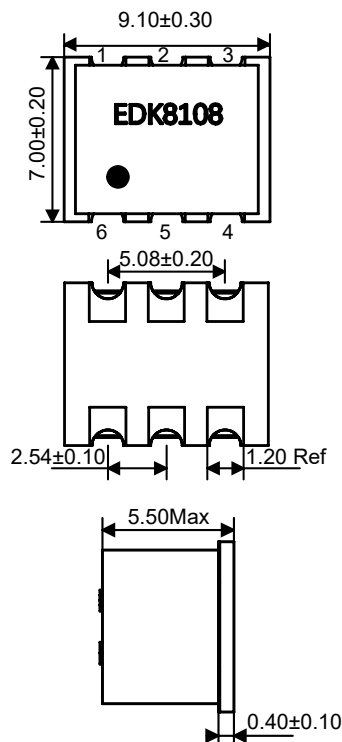
2021-05-31 Rev. 0

75Ω 2 Way-0° Power Divider

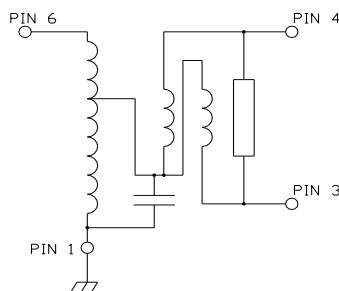
5-1000 MHz



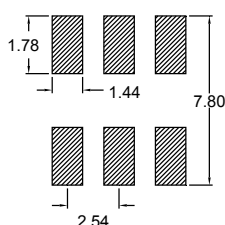
Outline Drawing(mm)



Schematic



Recommended layout(mm)



Pin Connections

| | |
|---------------|-----|
| Input Port | 6 |
| Output Port 1 | 4 |
| Output Port 2 | 3 |
| Ground | 1 |
| Not connected | 2,5 |

Features

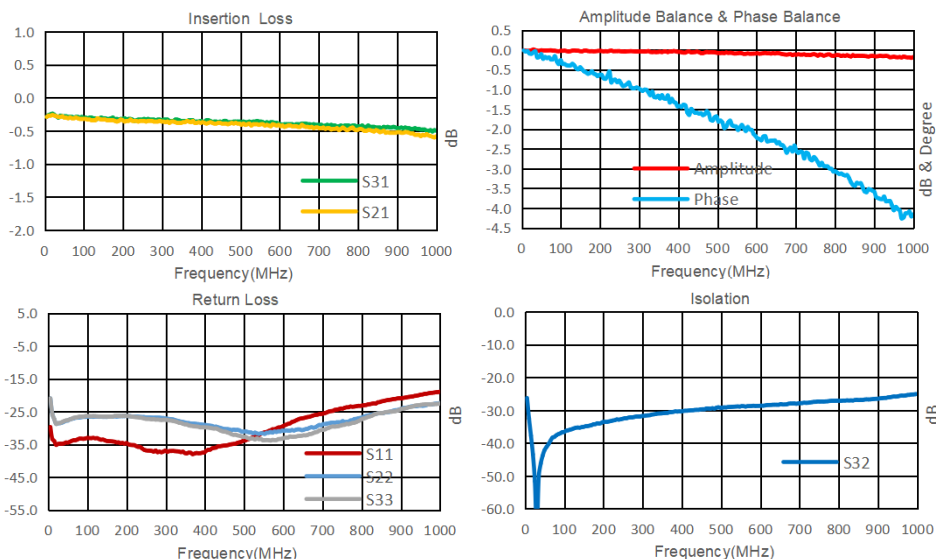
- Operating temperature range: -40°C to +85°C
- Storage temperature range: -55°C to +100°C
- 2 Way, 0 Degree
- RoHS* Compliant
- 260°C Reflow Compatible
- RF Power: 1.0W
- DC current: 240mA

Applications

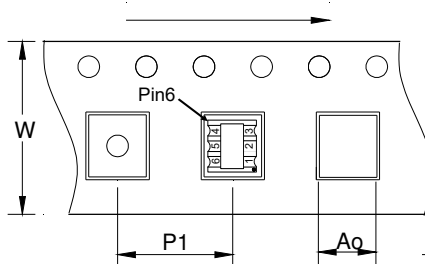
- EDK8108-C055440 is a 2 Way 0° Power Divider in a low cost, surface mount package. Ideally suited for high volume CATV/Broadband applications.
- For VHF/UHF receivers/transmitters and push - pull amplifiers

Electrical Specifications: TA=25°C, 0dBm, Z0=75Ω

| Parameter | Test Conditions | Units | Min | Typ | Max |
|------------------------|-----------------|-------|------|------|------|
| Port 1 Loss(S21) | 5-1000MHz | dB | — | 0.40 | 1.20 |
| Port 2 Loss(S31) | 5-1000MHz | dB | — | 0.30 | 1.00 |
| Amplitude Unbalance | 5-1000MHz | dB | — | 0.20 | 0.60 |
| Phase Unbalance | 5-1000MHz | ° | — | — | 6.00 |
| Input Return Loss(S11) | 5-1000MHz | dB | 16.0 | 35.0 | — |
| Port1 Return Loss(S22) | 5-1000MHz | dB | 16.0 | 26.0 | — |
| Port2 Return Loss(S33) | 5-1000MHz | dB | 16.0 | 26.0 | — |
| Isolation(S32) | 5-1000MHz | dB | 18.0 | 30.0 | — |



Carrier Tape Orientation



Tape & Reel Information

| Parameter | Units | Value |
|--------------|-------|-------|
| Qty per reel | PCS | 700 |
| Reel Size | mm | 330 |
| Tape Width | mm | 24.00 |
| Pitch | mm | 12.00 |
| Ao | mm | 9.20 |
| Bo | mm | 8.10 |
| Ko | mm | 5.50 |