

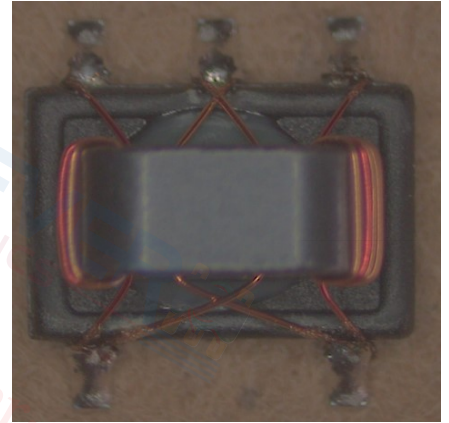
**Features:**

- ◆ Equivalent to:MACP-011037
- ◆ Surface mount and available in tape and reel
- ◆ 260°C reflow compatible
- ◆ RoHS Compliant and Pb free
- ◆ Operating temperature range: -40°C to +85°C
- ◆ Storage temperature range: -55°C to +100°C

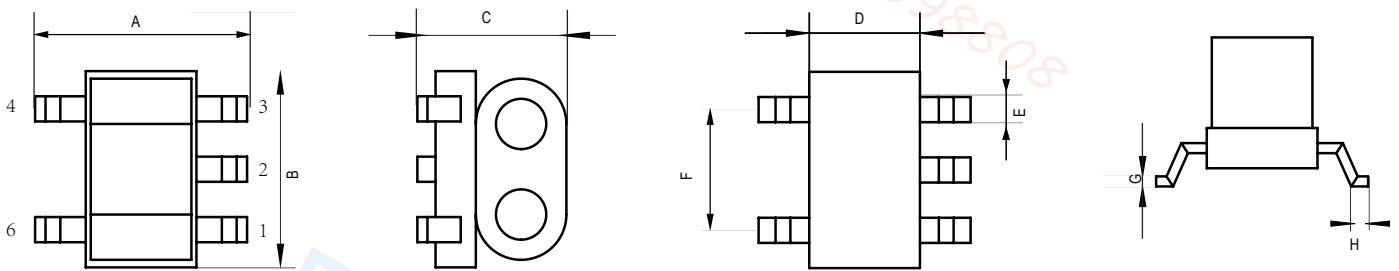


**Applications:**

- ◆ For catv
- ◆ For broadband and wireless communications



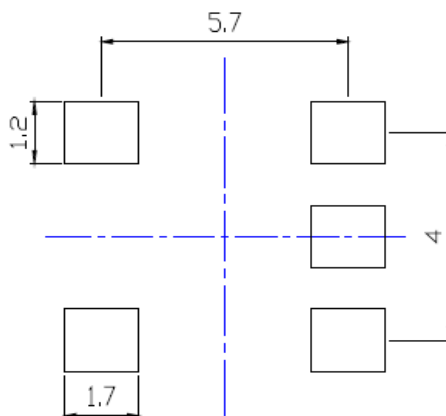
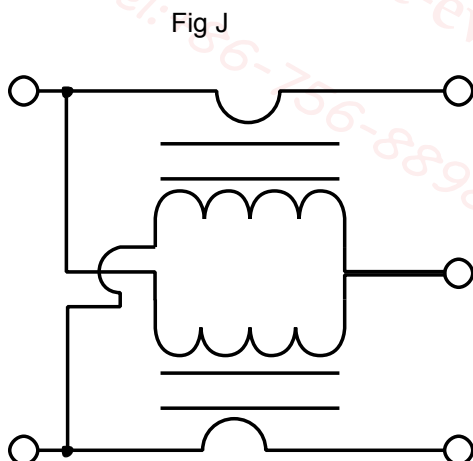
**Dimension diagram (Unit:mm) :**



A=6.20±0.20 B=6.00±0.20 C=4.30±0.20 D=4.00±0.20 E=0.60±0.10 F=4.00±0.10 G=0.25±0.10 H=0.50±0.10

**Electrical structure:**

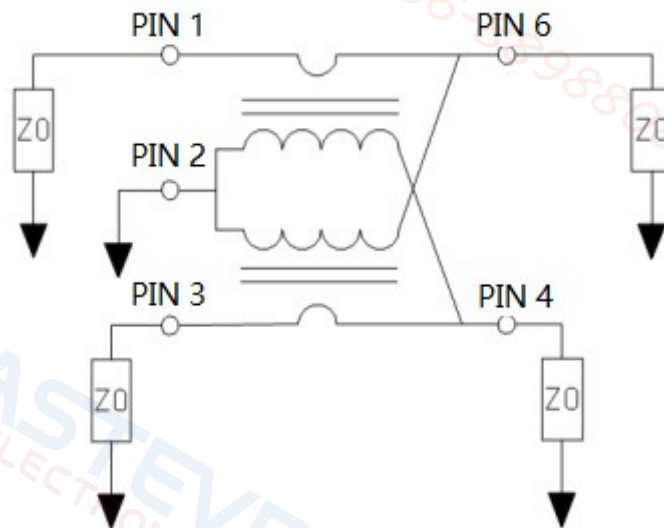
**Recommended layout(mm):**



Pin configuration:

Pin no.	Function
1	Input
2	Ground
3	Coupled
4	Isolated
6	Output

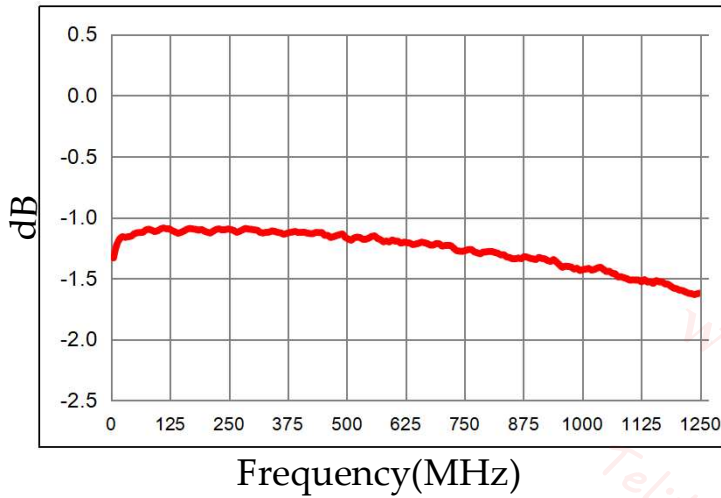
Application circuit :



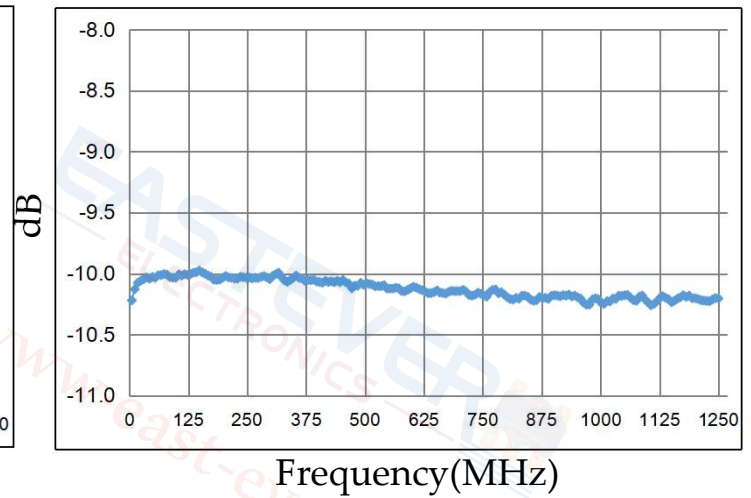
Electrical Specifications:  $T_A=25^\circ\text{C}$   $Z_0=75\Omega$

Parameter	Test Conditions	Units	Min	Typ	Max
Main line Loss	5-1250MHz	dB	—	1.2	2.0
Coupling	5-1250MHz	dB	9.2	10.2	11.2
Input Return Loss	5-1250MHz	dB	16.0	25.0	—
Output Return Loss	5-1250MHz	dB	16.0	25.0	—
Coupling Return Loss	5-1250MHz	dB	16.0	25.0	—
Isolation	5-1250MHz	dB	18.0	30.0	—

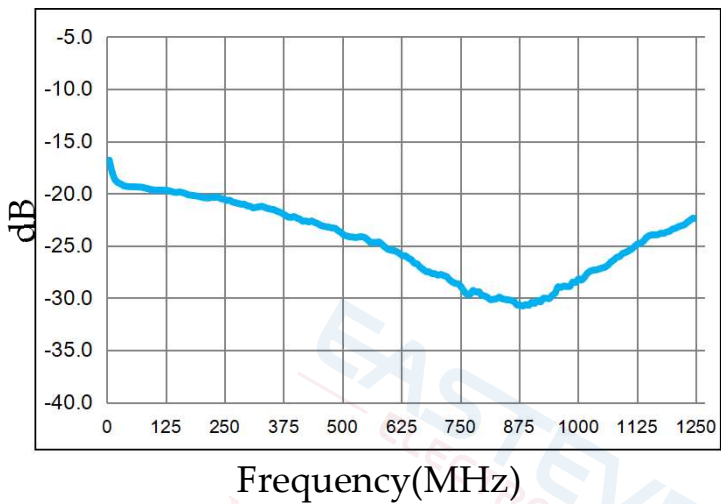
Main line Loss(pin1-6):



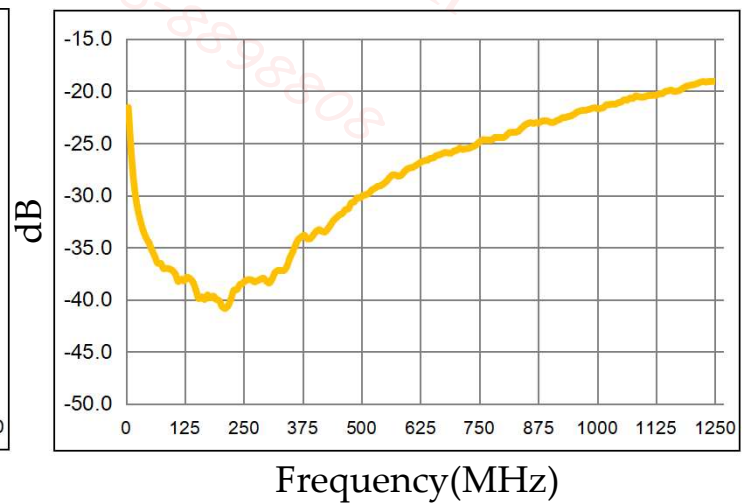
Coupling(pin1-3):



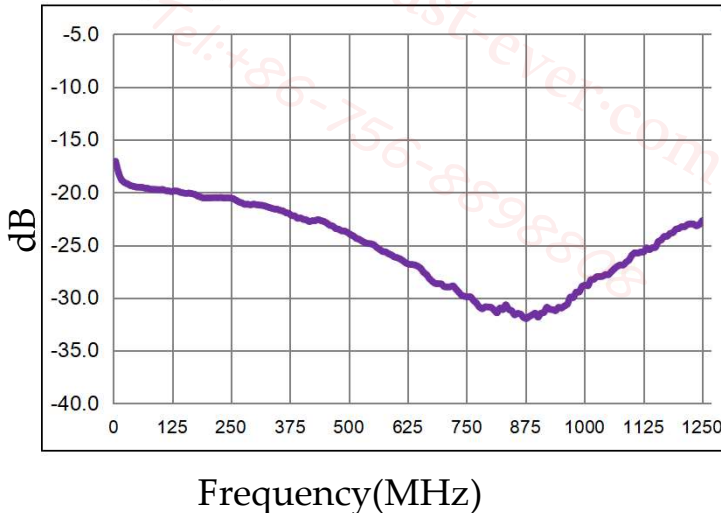
Input Return Loss (Pin1)



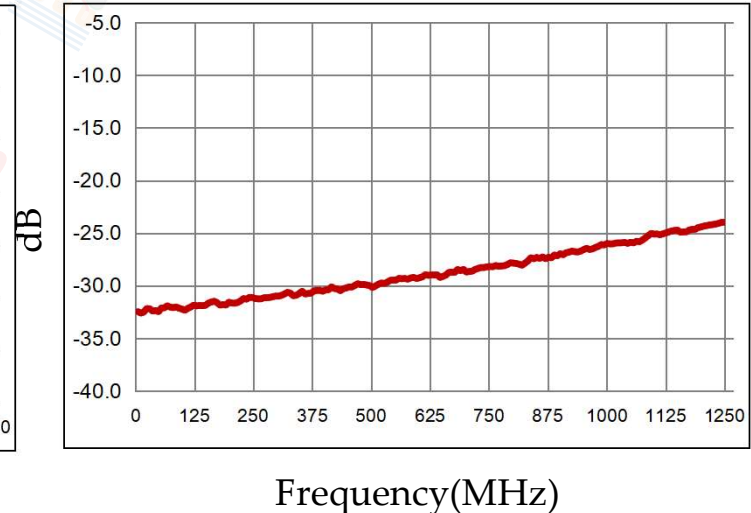
Output Return Loss (Pin6)



Coupling Return Loss (Pin3)

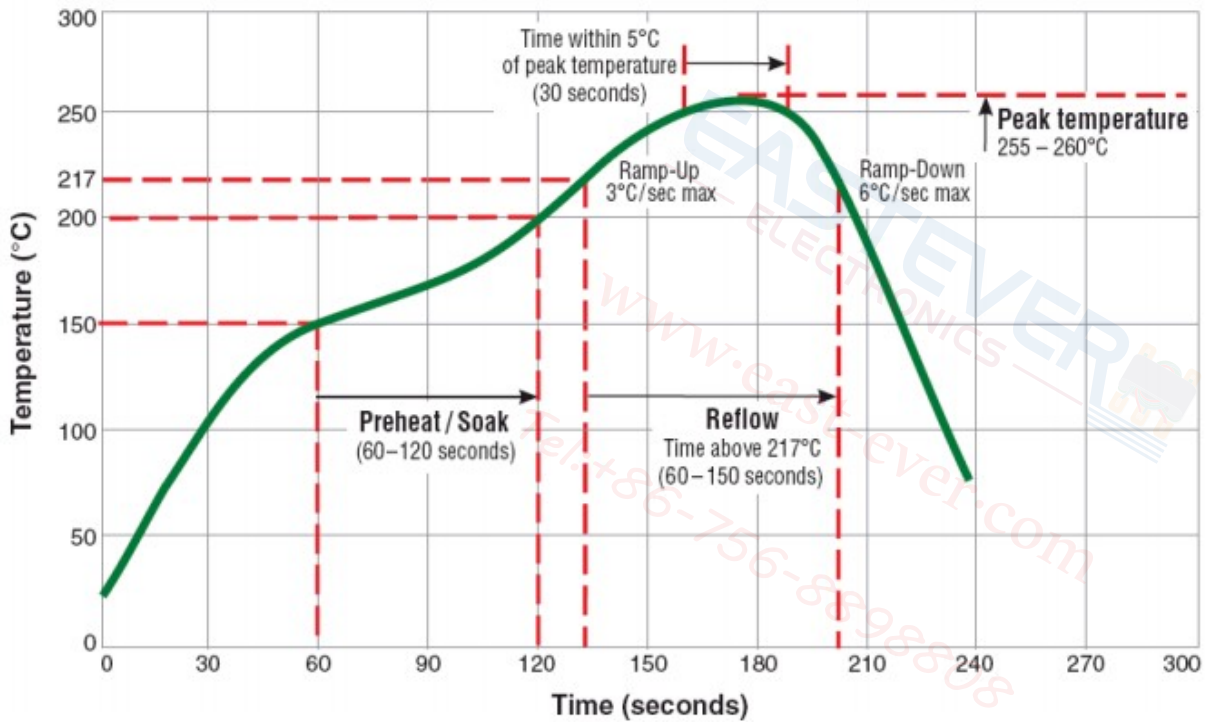


Isolation (Pin1-4)

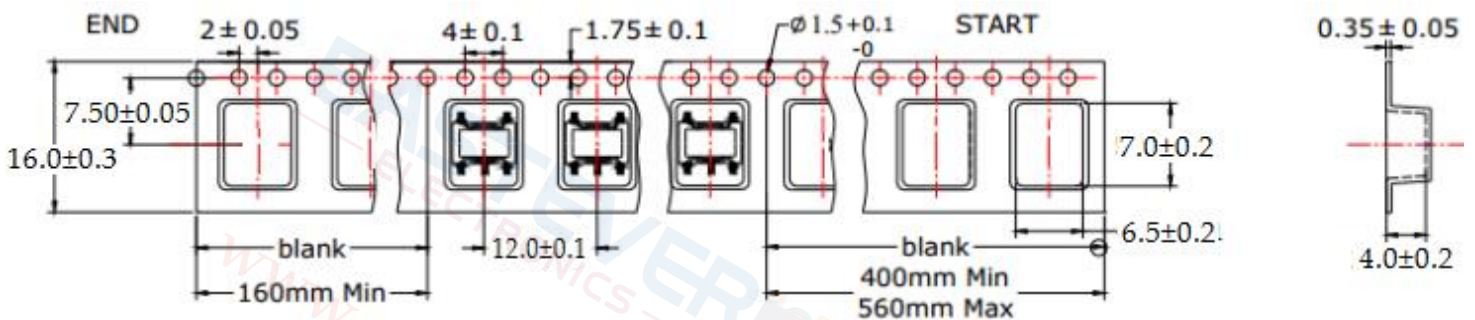


## Recommended Soldering Temperature Graph:

### Typical RoHS Reflow Profile



## Packing Dimension For Caeier Tape(UNIT:mm):



<b>QUANTITY</b>
1000PCS/Reel
3Reels/Middle Carton Middle Carton:
4 Middle Cartons/Big Carton
12000PCS/ Big Carton



SPEC	8	12	16	24
DIM A±0.1	8.5	12.5	16.5	24.5
DIM B±0.1	2.3	2.3	2.3	2.3
DIM C±0.1	100	100	100	100

